

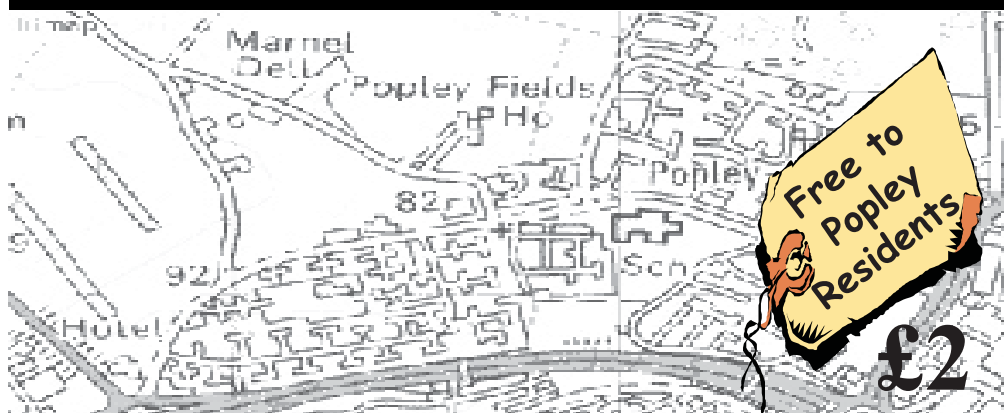
# POPLEY MATTERS

PROUDLY SERVING THE POPLEY COMMUNITY SINCE MAY 1992

March 2017

Distribution of 5,400

Issue 181



**FULL OF LOCAL NEWS AND VIEWS**

## Contents

Message from the Editor	Inside cover	Daisy Chain Nursery Poem	Page 16
Become a Dementia Friend	Page 1	Bermuda Hall News	Page 16
Councillors' Page	Page 3	Ark Cancer Centre Charity Bike4Cancer	Page 17
The Pink Place/The Blue Space	Page 4	Basingstoke Air Scouts	Page 18
Divorce Recovery Workshop	Page 6	Phillips Legal Corner	Page 20
Over 55s Forum	Page 6	MFC Popley	Page 22
Popley Fields Mill Cottage Farm Experience & Easter Fun Day	Page 7	Festival to Celebrate Jane Austen	Page 23
High Hopes for Miss Basingstoke 2017	Page 9	Melrose Hall Grand Jumble Sale!	Page 25
Arthur Botham	Page 10	Melrose Hall Race Night @ Popley Fields	Page 25
Merton Pops into Parliament	Page 11	Hospital Radio Basingstoke	Page 26
North Hampshire GPs Urge Women to Attend Smear Tests	Page 12	St Gabriel's Church Presents Movie Time	Page 27
Notice Your Neighbourhood	Page 14	The Keith Brant Multiple Sclerosis Trust	Page 27
Marnel & Popley Conservation Volunteers	Page 15	St Michael's Hospice Farleigh Wallop Woodland Walk	Page 28

Closing date to submit articles & adverts (5pm 15-3-17) [editor@popleymatters.org.uk](mailto:editor@popleymatters.org.uk)



Editor  
Jane Frankum

**Message from the Editor:** March winds: hate them worse even than thunder and lightning. I often wondered why I had this fear only to be told by my brother that my mother was the same. How much do we pass on to our children without even thinking about it?

We had to call out Thames Water three times in a few days as the drain in the pathway by our house was pouring out waste water along the path into the road. Three times they cleared it and said it was wipes and they showed me the lump of wipes and clothes after

they had put down the camera to see what the problem was. The workmen that came all said the same thing, “ These wipes cause most of the blockages we have to clear”. The moral of the story is “Bin it don’t Block it” Oil and fats are also a problem.

This month’s Popley Matters has a few events in that are coming up for you or your families. Everything from Dementia training in Everest Community Academy details on page 1 Divorce Recovery Workshop, page 6; helping at Popley Ponds with the conservation volunteers, page 15; or how about helping to raise funds for The Ark Cancer Trust by doing the sponsored bike ride on, page 17. There is always lots to do at Basingstoke Air Scouts in Base 2000, page 18. The young ones might like the football, page 22. At St Gabriel’s Church on 25th March Movie Time with two films, details page 27. Finally this month at Popley Fields Centre there is a big race night run by Melrose Hall committee.

Coming up in April is The Woodland Walk in Farleigh Wallop in aid of St Michael’s Hospice, page 28, and Mill Cottage Farm and Fun Day at Popley Fields Community Centre, page 7.

Email the Editor at [editor@popleymatters.org.uk](mailto:editor@popleymatters.org.uk). Contact me at either 405 Abbey Road, phone me, on 01256 819924 or email me at [editor@popleymatters.org.uk](mailto:editor@popleymatters.org.uk).



Sub Editor  
Paul Frankum

The views in this publication are not necessarily the views of the editorial team, the members of the committee, or the Popley Matters magazine.

**Editorial Team:-** Editor Jane Frankum; Sub-Editor Paul Frankum; Chair Terry Jones; Area Distribution Manager Jeremy Jackman ;Treasurer Christopher Martin; Proof Readers Lorraine Beaney and Iris King.

**Distribution Team:-** Martin Beirmann; Hom Bahadur Pun; Jenny Bailey; Linda Banfield; Geoff Bassett; Mollie Beeson; Amanda Bellemey; Tony Frankum; Stacy Hart; Pat Hamilton; Stuart Humphries; Jeremy Jackman; Terry Jones; Walter and Sue Kerr; Simon Leadbetter; Cathy Li; Nick Lloyd; Angela Lockwood; Ann Marke; Vera Mitchell; Mick Portlock; Kath Smith; Joel; Christine Spencer; Christine Taylor; Keith Theobold; Janet Ward; Jo Cousins and Carole Wheeler

#### Advertising Index

Jonathan Williams Independent Funeral	Page 2	JBDrive	Page 13	Lawrence Young Ltd	Page 21
Directors	Page 2	Happy Tails Grooming	Page 13	The Koi Dojo	Page 24
AAA Clearance House and Garden	Page 2	Daisy Chain Nursery	Page 13	IPS Hair	Page 24
NCA Services	Page 2	Spencer and Peyton Ltd	Page 13	MMc Electrical	Page 24
Ovenclean	Page 2	Jars Cars	Page 14	Mickey’s Handyman Services	Page 24
Steve Rayner Accountancy	Page 5	Theatre Train	Page 14	Linguatastic	Page 25
First Class Learning	Page 5	Mark Smith Plumbing and Heating	Page 19	St Gabriel’s Church	Page 27
Unique Block Paving	Page 5	Fyne Flooring	Page 19	The Barn Bathroom Centre	Inside B/P
IRepair Systems Ltd	Page 5	M H Autos	Page 19	Fastfare Store	Back Page
RCGG Rehoboth Chapel Bstoke	Page 8	1st Response	Page 21	Fastfare Pharmacy	Back Page
Everest Community Academy	Page 8	Piccolo Pre-school Nursery	Page 21	Thank you for your support	

# **Become a Dementia Friend**

Do you have an hour to spare? Then have you considered.....  
becoming a Dementia Friend?

Free training is available, it only takes an hour of your time but the benefits could last a lifetime!

Dementia Friends gives people an understanding of dementia and the small things you can do that make a difference.

There are now over one million Dementia Friends across England and Wales who are going out into their communities with a greater understanding of dementia and some of the ways they can help people living with the condition. From being more patient in shop queues, to volunteering, to campaigning for change, Dementia Friends are helping to create communities in which people living with dementia feel more understood and included.

Alzheimer's Society's Dementia Friends programme is their biggest ever initiative to change people's perceptions of dementia. Dementia touches the lives of millions of people across the UK. Dementia Friends was launched to tackle the stigma and lack of understanding that means many people with the condition experience loneliness and social exclusion. We need to create more communities and businesses that are dementia friendly so that people affected by dementia feel understood and included.

There are two training sessions available on Monday 20<sup>th</sup> March at Everest Community Academy, Oxford Road, Popley, RG24 9UP.

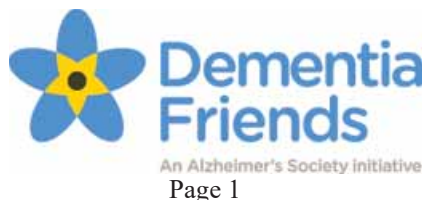
Session 1 – 10.00am – 11.00am

Session 2 – 7.00pm – 8.00pm

Tea and coffee included, wheelchair accessible.

For further details and to book a place  
contact: John Perrin

on 01256 337573 or Email: [jperrin@everestcommunityacademy.org](mailto:jperrin@everestcommunityacademy.org)



# JONATHAN WILLIAMS

Independent Funeral Directors

- Family run Funeral Directors with traditional high standards
- Providing a caring dedicated and professional service 24 hours a day, 365 days year
- Private and peaceful Chapel of Rest
- Our Family caring for your family



35-41 Essex Road

Basingstoke RG21 7TB

## 01256 817603

(24hrs)



## AAA CLEARANCE HOUSE AND GARDEN CLEARANCE IN BASINGSTOKE.

- YOUR UNWANTED ITEMS REMOVED AND RECYCLED FOR A SMALL CHARGE
- GARDEN RUBBISH CLEARED
- FURNITURE MOVED
- MAN WITH BIG VAN SERVICE
- FULLY INSURED
- WASTE CARRIERS LICENCE
- SCRAP METAL COLLECTORS LICENCE
- UP TO 100% OF WASTE RECYCLED
- PRINCES TRUST SUPPORTED BUSINESS
- SCRAP METAL COLLECTED

PLEASE GIVE US A CALL

07783488412

OR EMAIL

[aaaclearance@outlook.com](mailto:aaaclearance@outlook.com)

## NCA SERVICES

For All Your Property Needs!



01256 533140

07826375515



[ncahandyman@gmail.com](mailto:ncahandyman@gmail.com)

Free No Obligation Quotes & Advice

**No job too small!**

All General Household Repairs Undertaken

Intergas TM Approved Installer

(5 yrs Warranty on all Intergas Boilers Installed)

Boiler and Central Heating Installations and Servicing

Electrical Installations, Inspections and Fault Finding

Property Maintenance & DIY Rescue

Plumbing and Home improvement

30 Years Experience

Fully Insured and

Registered



## DOMESTIC OVEN

### CLEANING

By the UK's largest oven  
cleaning company



Non-caustic

Ovens, hobs, extractors and  
microwaves cleaned

Fresh solutions every time

**Don't forget we clean BBQs too!**

**01276 473118**

**07882 886736**

[www.ovenclean.com](http://www.ovenclean.com)

**Councillors' Page:** I have again reported several issues around Popley to the Highways department; parking, paths, broken street signs and broken kerbs. All have been registered and some put on the priority list for urgent repair. If you see an issue please contact me.

The poor drainage along the path to the hospital is now on the list and I continue to fight to have the path Tarmacked. The severe cuts to all departments is making the issues worse as they continue to cut funding from central government.

Parking issues around Merton Junior School especially at peak school times also requires attention and the school Head has sent round a letter asking for drivers to think about the impact when they block residents' driveways and garages.

The A339 looked a mess; a broken bumper; watering can and general waste strewn all along that part of the road and over the bridges was cleared. It is an ongoing problem with drivers who use that busy road choosing to discard food wrappings and bottle etc. from their cars. A really worrying issue as some are likely to be the drivers themselves which means they put people at risk as they cannot be giving their full concentration to the roads and traffic. *Cllr Jane Frankum 01256 819924 email [jane.frankum@hants.gov.uk](mailto:jane.frankum@hants.gov.uk)*

**Popley West:** Route 55, the new Community Transport charity route is getting some new passengers and is a blessing to at least one lady who used the bus to be able to get to A & E when she had an eye injury. Sadly not enough people are using this service and it may have to be reviewed. The route and times can be found on their website and we Labour Councillors are helping to get leaflets printed and delivered.

New equipment and improvements to Popley Community Park and Tintern Close have been consulted on and should be installed in time for the summer holidays. While on the subject of the play areas could dog owners please remember not to take their dogs inside areas railed off? It is not fair on the children or the dogs to put anyone at risk. Most dog owners are very responsible and indeed it's them that complain, rightly, that care should be taken and dog's mess should be picked up and disposed off properly. It is a great park and should be enjoyed by everyone.

Please contact any of the team if you have any issues, comments or complaints.

**Cllr Paul Frankum 01256 819924**

[cllr.paul.frankum@basingstoke.gov.uk](mailto:cllr.paul.frankum@basingstoke.gov.uk)

**Cllr Jane Frankum 01256 819924**

[cllr.jane.frankum@basingstoke.gov.uk](mailto:cllr.jane.frankum@basingstoke.gov.uk)

**Popley East:** Last year we wrote to all the residents of Popley advising them of a planning application that had been submitted for an energy storage facility to be located within Basing Woods. This was subsequently withdrawn but it is possible that a new application may be submitted for an alternative location, but still situated within the woods. Should this turn out to be the case we will oppose this application. On 10th February, residents joined us in a protest which we had arranged to coincide with an event being held by the Forestry Commission at the woods. Due to the bad weather the Forestry Commission cancelled their event, however they had been made aware of our intention to hold the protest there.

Despite the really heavy rain more than 30 people attended showing the strength of feeling against the proposal. Our thanks go to all those who joined us. We will keep you informed should a further proposal be submitted.

A planning application has been submitted for a family restaurant/pub on land currently owned by the Hampshire Fire Authority on Carpenters Down, near to Shetland Road. The full application can be viewed on the BDBC website under 17/00380/FUL. As ward councillors we have consulted with the residents of the homes nearby to get their views on the application.

**Cllr David Potter 07941507801**

[cllr.david.potter@basingstoke.gov.uk](mailto:cllr.david.potter@basingstoke.gov.uk)

**Cllr Janet Westbrook 07747335200**

[cllr.janet.westbrook@basingstoke.gov.uk](mailto:cllr.janet.westbrook@basingstoke.gov.uk)

# Providing Support and Free Services

For ladies and gents with a cancer diagnosis

## Ladies:

Open to ladies (18+)  
with any form of cancer.



We provide sessions where you can meet others and enjoy some hairdressing, relaxing therapies (eg massage and reflexology, nail painting) and counselling in our Basingstoke town centre premises. We offer a wig service and run monthly lunch clubs and coffee mornings.



## Gentlemen:

The Blue Space provides free services and support for men with any form of cancer. Sessions provide an opportunity to talk to and help others, get information and enjoy therapies (massage, reflexology) to relieve stress and improve feeling of well-being.

## Partners:

We hold joint social evenings for people with cancer and their partners to socialise, get information, and gain support. We also have a monthly Blue Space Social Group for men whose partners have a cancer diagnosis.

*For more details on any of our sessions and events please contact us:*

[www.thepinkplace.org.uk](http://www.thepinkplace.org.uk)

The Pink Place Cancer Charity— 3 Wote St, Basingstoke

Registered Charity Number: 1153494

Tel: 07899 970 841

[Info@thepinkplace.org.uk](mailto:Info@thepinkplace.org.uk)

[Info4bluespace@gmail.com](mailto:Info4bluespace@gmail.com)

# Accountancy For Small Businesses

- **Business Accounts & Tax**
- **Self Assessment Returns**
- **Bookkeeping, VAT & Payroll**
- **Fees fixed in advance**
- **Company start up advice**

**Call Steve Rayner on  
01256 471284 or see  
[www.taxassist.co.uk/basingstoke](http://www.taxassist.co.uk/basingstoke)**



## NEW CENTRES IN BASINGSTOKE

MATHS & ENGLISH TUITION



### We can help to:

- ✓ Improve school performance
- ✓ Gain confidence and self-esteem
- ✓ Develop independent study skills
- Follows the National Curriculum
- Relevant to school work and tailored to your child.
- Designed for students in the UK: **Early years, primary and junior** through to **secondary, college and adult students.**
- Preparation and Practice for all exams & tests: SAT's, 11 Plus, GCSE's, A levels, School Entrance.
- Second subject discounts available.

### LYCHPIT:

#### **EVERY MONDAY**

**Time:** Sessions between 15.30-17.30

**Venue:** Lychpit Hall (next to Tesco Express), Great Binfields Road, Lychpit. RG24 8TF

### ROOKSDOWN:

#### **EVERY TUESDAY**

**Time:** Sessions between 15.30-17.30

**Venue:** Rooksdown Community Centre (next to Basingstoke Hospital), Park Prewett Road, Rooksdown. RG24 9RG

Centres throughout the UK. Please contact your local centre:

**07415 546491 or 01256 541005**

[basingstoke.lychpit@firstclasslearning.co.uk](mailto:basingstoke.lychpit@firstclasslearning.co.uk)

[basingstoke.north@firstclasslearning.co.uk](mailto:basingstoke.north@firstclasslearning.co.uk)

## UNIQUE BLOCK PAVING

Derek Hooley (NVO Qualified)

- Driveways & Patios
  - Walls
  - Fencing
- Cleaning of existing drives and patios

No job too small  
Daily rates for labour only or supply and fit

Fully insured, local tradesman

Free, no obligation quote.

01256 474912

Or

07973 865359



**iRepair Systems Ltd**

Unit 10, Hassock Wood Bus. Centre  
Stroudley Road  
BASINGSTOKE, RG24 8UQ  
Phone: 01256 468264,  
[enquiries@irepairsystems.com](mailto:enquiries@irepairsystems.com)

We are authorised by Apple to repair their products, both in and out of warranty. We have online booking, monitoring and requests at [www.irepairsystems.com](http://www.irepairsystems.com).

We repair warranty ipods too.

"...grateful thanks for your super, speedy and efficient service..." Mrs T. from Hook



**Authorised Service Provider**



# Divorce Recovery Workshop

Are you struggling with the breakdown of a serious relationship or marriage?

Asking yourself why me?  
Struggling with the trauma?  
Feeling like nobody understands?

Whatever stage of a divorce or separation you are in, the Divorce Recovery Workshop may be able to help you! Our Motto is that you can go through it or grow through it. We are a national charity run by local volunteers who have ourselves experienced divorce or separation and been through the workshop.

Our next workshop starts on Tuesday 14th March and runs for 6 weeks held at Buckskin Evangelical Church.

Please visit our website [www.drw.org.uk](http://www.drw.org.uk) or contact us for more information or to book a place give us a ring. Call Erica on 01256 478778/ 07789717076 or Frank on 07799141891.



---

## Over 55s Forum

Now that we have come to the end of our financial year, we are now able to bring in for the membership the 40 to 50 people who have been on our waiting list. I feel that we should soon be reaching our ceiling of 650.

The dates of our bi-monthly Open Forum meetings at the Carnival Hall are 12th April, 7th June, 9th August, 11th October and 6th December 2017. Non members are welcome to attend, but will have to wait until all the paid members have been seated. 2017 Coach trips are; **10th March** - Chislehurst Caves and Polhill Garden Centre. Includes all coach travel and entrance fee. Members £18.50, Non members £20.50; **9th April** - Chatham Dockland with tour of the Victorian Ropery and Submarine. Includes all coach travel and entrance fee. Members £28.50, Non Members £30.50; **25th May** - Laycock Village and Devizes Market. Includes all coach travel. Members £13.75, Non Members £15.75;

**7th July** - Hampston Court Flower Show includes all coach travel and entrance fee - Members £44.40, Non Members £46.40

Our Carnival Chorus singing group still meet every Tuesday from 1.30 to 3pm at the Carnival Hall for weekly practice. New members are more than welcome to come along and join in, it is very good for people with lung or breathing problems.



# Mill Cottage Farm Experience & Easter Fun day

Saturday 8th April, 12 - 3pm

Come feed, touch and learn about farm animals, also Easter egg hunt, Easter bonnet competition, craft activities, cakes and refreshments

£3 per child, adults free!

Popley Fields Community Centre  
Carpenters Down, Popley  
RG24 9AE

01256 414494

office@popleyfields.org  
www.popleyfields.org

**Popley Fields**  
Community Association





*"Worship with us at your local family church"*



# RCCG Rehoboth Chapel

## Basingstoke

EVERY SUNDAY

**SERVICE TIME:**  
**2:30PM - 4:00PM**

**ADDRESS:**  
Popley Fields Community Centre,  
Carpenters Down,  
Basingstoke,  
Hampshire,  
RG24 9AE



*For more information:*

Contact: Nola 07836 111191 Email: [rccgrehobothchapel@btinternet.com](mailto:rccgrehobothchapel@btinternet.com)

*"Haven of fruitfulness and life transformation"*



[rccgrehoboth](https://twitter.com/rccgrehoboth)



[RCCGRehobothChapelBasingstoke](https://www.facebook.com/RCCGRehobothChapelBasingstoke/)



**Everest**  
**Community Academy**  
To make our best better

A school to be proud of



Everest Community Academy  
Oxford Way,  
Basingstoke  
RG24 9UP

Phone: 01256 485547

# **High Hopes for Miss Basingstoke 2017**

Nicola Ascroft, 23 years old, from Popley, has high hopes for becoming a Miss England Finalist again this year. Last year saw her hard work and determination pay off when she won the 'Charity Queen' award at the Semi Finals for being the top fundraiser across the nation, as well as a placing in the Top 20 at the Miss England Finals 2016, out of the outstanding 22,000 girls that entered!

This year, she has already earned herself a place in the Miss England Semi Final, which will be held at Kelham Hall in Nottingham on 4th June 2017. Approximately 10 girls will be taken through to join the other regional heat winners at the Grand Final in July. Nicola says, "It is an honour to be part of a prestigious organisation where charity is at the heart of it. Having won the charity award at the Semi Finals last year, I am even more determined this year and would love to hold my title by winning that same award again".

Throughout the past two years of being a part of the organisation, Nicola has used her title as a platform to help many local and national charities. This has been not just raising awareness, but raising vital funds that each and every charity needs. Not only has our reigning Miss Basingstoke attended charity events such as the annual Anna's Challenges Ball, The Basingstoke Rotary annual boxing match; volunteered at Naomi House; and helped the homeless; but she has also organised many events of her own. It is with the great support and generosity of yourselves that has enabled Nicola to raise over £13,000 for various charities in the past couple of years.

Throughout this year, Nicola will be hosting more charity events which she hopes you will be kind enough to support her in. Keep your eyes peeled for what is coming up soon!

(Photo credit: Dan Collins - Third Avenue Photography)





Dear Friends

Everyday we ask so many questions: what should I wear; what's the weather like; what do we eat today. But what about those much much bigger questions. "Where do you go for answers to LIFE'S BIG QUESTIONS?" was the opening gambit as we began running our latest Alpha course at St Gabriel's. Based around some great vox-pop presentations the responses weren't at all surprising: my mum; my dad; my best mate; the Internet; Google! Like I said, not surprising! What are LIFE'S BIG QUESTIONS? Is it: where and what should I do when I leave education? Where or what will my career be? Will I ever meet someone and fall in love? Or is it bigger still: "Why am I here? Where am I headed? Is this it? Is there more to life than this? These are life's big questions and there rarely seems to enough time these days to think about the answers – but still they're there, gently nagging us in the background, sometimes raising the voice loudest at those critical moments in life.

Whether we like to admit it to ourselves or not we are all searching – searching for answers to those big questions, searching for meaning searching for ... what?

We're running Alpha as an opportunity for anyone and everyone to perhaps explore some of those questions in relation to the Christian faith I'm asked quite a bit about the Christian faith and often people will say to me that they're not religious but believe in God. My response is always that relationship with God is first and foremost. Religion without relationship is an empty vessel, a husk.

The thing I have found with my faith is that, in its context, I have found answers to life's big questions and understanding those answers has helped me enormously to live in the ordinariness of everyday life with a completely different perspective.

I have been writing this page every month for almost thirteen years now and I haven't really ever set out to challenge, but I sense now is the time. If you feel that you're looking for answers then can I invite you personally to come along to St Gabriel's and begin a journey of exploration? You'll find many others alongside you on that journey and I can promise you it's well worth it. Jesus said "I am the way, the truth and the life. If you're looking for the way, truth and life then this is the perfect place for you! Hope to meet you in person - soon!

**Every blessing**  
**Arthur**  
**St Gabriel's, 01256 324734**  
**[www.projectg.org.uk](http://www.projectg.org.uk)**

## Merton Pops into Parliament



Miss Light from Merton Junior School was recently selected to take part in an exciting three day course in the Houses of Parliament as part of the Teachers' Institute for Parliament Education.

Alongside her, were 65 fellow teachers, ranging from primary to further education, from across the United Kingdom.

During the three days, they were able to tour the Houses of Parliament and have Question and Answer sessions with many different people who work there, for example, Mr Bercow (the House of Commons Speaker) and several Members of Parliament.

She was also lucky enough to be able to sit in the gallery of the

House of Commons and to watch them in action- she was really surprised to see how different it was to how it all looks and seems on the TV!

Miss Light found this experience really exciting and eye opening as she had realised how little that she actually knew about what happens in this iconic building. It was then that she started to wonder about how much our own children at Merton Junior School knew, other than the sometimes stereotypical viewpoints seen on the news.

Spending the three days with other teachers in similar situations, allowed her to think about ways in which she can teach children about democracy and its history and importance.

As a school, Merton Juniors are ready and really excited to see how Miss Light can bring all of the wonderful ideas to life within our school.



John Bercow – Speaker of the House of Commons

## North Hampshire GPs Urge Women to Attend Smear Tests

Our GP Practices want to enlighten women about the importance of attending their smear test. You may think it's not a great topic to highlight in these pages, but it could save lives.

With better treatment, the Cervical Screening Programme and the availability of Human Papilloma Virus (the anti-cervical cancer vaccination for young girls), the survival and prevention of cervical cancer has improved dramatically in the last decade.

But, a staggering number of women are being diagnosed with cervical cancer every day. Sadly three will also lose their battle against this terrible cancer.

One of the biggest reasons for this is not attending the screening programme (more commonly known as the smear test) when invited. This test picks up changes in the cells of the cervix before cancer has actually developed. All women aged 25-49 receive an invite to attend every three years, and those aged 50-64 every five years.

Despite this many young women are not attending their smear tests. Our GPs are encouraging all women to get your test booked as soon as you receive the invite.

Our GP and cancer specialist Dr. Charlotte Hutchings said:

'Cervical screening prevents around 5,000 cases of cervical cancer every year in the UK. It is a concern that the test in younger women is decreasing in North Hampshire. We need to educate women about the test sensitively so they can make an informed decision about whether to have the test. Screening is an important part of the fight for better cancer survival in the UK.'

For more information about cervical cancer and the need to attend your smear test please go to the NHS Choices website:  
<http://www.nhs.uk/conditions/cancer-of-the-cervix/Pages/Introduction.aspx#>  
Stay Health



# JBDRIVE

James Bone  
ADI **M: 07823884522**

Patient friendly instructor, learn at your own pace  
with 1 to 1 lessons incl Evenings & Weekends  
Good Pass rates Fully insured Dual control car

**First 5 for £100**  
**10 Hours for £220**  
**£26 per Hour**

Single lesson Discount for holders of  
Student NHS or Forces ID cards

**Full 'L' Test training with theory tuition included**

Motorway lessons    Pass Plus    Refresher courses



**WWW.JBDRIVE.co.uk**  
**E: JBDRIVE@Live.com**



**Daisy Chain**  
DAY NURSERY

Purpose built Nursery  
8am-6pm 51wks  
All ages from 3mths -5yrs  
Excellent reputation  
Fabulous staff



Why not check us out?

Claim your **free funding** with us!

Daisy Chain, Carpenters Down,  
Basingstoke, RG24 9AE  
01256 356084  
info@daisy-chain.uk  
www.littleshipmates.com



Happy Tails Grooming offer very competitive prices but maintain the level of  
quality and service you would expect

Telephone: 0751 624 5192 • happytails\_grooming@hotmail.co.uk  
www.happytailsgrooming.moonfruit.com



29, Oakridge Rd, Basingstoke, Hampshire RG21 5SE

## Spencer & Peyton Ltd

Established 1961

3rd Generation  
family owned  
and run Funeral  
Directors and  
Monumental  
Masons

24 Hours

**Our family  
serving your family  
for over 50 years**

380 Worting Road  
Basingstoke, RG22 5DZ  
**01256 323165**

7 London Road  
Hook, RG27 9DY  
**01256 761717**

**Trading Standards  
approved**

**Pre-paid funeral plans  
discussed without obligation**

spencerandpeyton@btconnect.com





## Notice Your Neighbourhood

If you spot an issue, please let us know and we'll do our best to help.

### What can I report?

There are lots of things you can report to us for repair or removal in your neighbourhood and some examples are below. Visit [www.basingstoke.gov.uk/report](http://www.basingstoke.gov.uk/report) for the full list as well as how to report problems with a highway.

- Graffiti
- Found needles
- Fly tipping
- Litter
- Broken glass
- Dog fouling
- Overflowing bins
- Abandoned vehicles
- Damaged trees
- Overhanging vegetation and hedges
- Excessive weeds on busy footways
- Damaged equipment in parks and open spaces



### How can I report it?

[www.basingstoke.gov.uk/report](http://www.basingstoke.gov.uk/report)

Download: An app such as 'Love Clean Streets', 'Fix My Street' or 'My Council' through the app store

Call: 01256 844844

© Basingstoke and Deane

# Jars Cars & Minibuses



## 01256 819844

Airport & Dock Service



[jarscarsbasingstoke@aol.co.uk](mailto:jarscarsbasingstoke@aol.co.uk)  
Cars & 8 Seater Minibuses available

## THEATRE DANCE TRAIN ACT SING

The Everest Community Academy, Oxford Way, RG24 9UP

EVERY SATURDAY IN TERM TIME

Main School for ages 6-18.....10am – 1pm

TT Minis for ages 4 and 5.....9am – 10.30 am

Join us for a **FREE TRIAL SESSION!** You will have a class of Dance, Singing and Drama in age groups 6-9's, 9-12's or 13-18's.

Be part of our show at The Haymarket Theatre, June '17!!



Call: 07901 557 569

[basingstoke@theatrettrain.co.uk](mailto:basingstoke@theatrettrain.co.uk)

[www.theatrettrain.co.uk](http://www.theatrettrain.co.uk)

THE COMPANY THAT LOVES TO PERFORM



Popley Ponds First of all, a big thank you to those of you who turned out for our first working party at the ponds in late January. It was a small but hardy band of volunteers who fought our way through the jungle on the Tobago Close side of the ponds to clear a new pathway. As one of the team said, we really should have taken before and after pictures to show what a massive difference we made.

We have made a start on removing rubbish from the main pond but there is still a lot of work to do. Now the water is getting deeper we could really do with a boat but sadly our tiny budget won't stretch to that. If anyone has a spare one hanging around do let us know!

Our main focus at the moment is on the backlog of activity, such as litter picking, trimming back overgrown trees and clearing paths. As spring arrives, we are planning some nature activities at the site (pond dipping and bottle trapping have been suggested) which will be great for families.

For anyone else who is interested in joining us, we will now be holding a regular monthly working party on the fourth Saturday of each month. The meeting point is at the entrance to the ponds off Tobago Close and we typically start at 10am.

Finally, we now have a Facebook group (Marnel & Popley Conservation Volunteers); check out the picture of a harvest mouse nest that was found after our last working party. New members with an interest on the Group and our plans are very welcome.

**Gill Smallman**

[www.naturalbasingstoke.org](http://www.naturalbasingstoke.org)

e-mail: [popleyponds@gmail.com](mailto:popleyponds@gmail.com)

Facebook: Marnel & Popley Conservation Volunteers

# **Daisy Chain Nursery Poem**

We go on bug hunts, watch the deer, look in the stream and watch our leaves float.  
We walk to the pond to float our homemade boats.  
We play in the park, such good exercise and fun where we tour and let our imaginations run.  
We also sit and eat our snacks in the sun.  
We make feeders for birds, save acorns for the squirrels and make leaf dens for the hedgehogs.  
We wear our wellies and splash in the bogs and watch the tadpole turn into frogs.  
We make camps out of fallen branches too, and follow the woodland trails which have lots to explore and do.  
We never want to go back when in our lovely forest with all these adventure out there to explore.  
We only came back for our meals “we must eat” but the time in the forest is such a special treat.

## **Daisy Chain Nursery**

**The children views from Sunflower room.**

---

## **BERMUDA COMMUNITY CENTRE**

We have Popley Explorers Pre-school Monday to Friday from 8.30am until 3pm. For full details ring Sharon on 363156.

We also have lots of exciting things going on in the evenings!

Monday night is kick boxing from 6.30 until 8pm Come along and join in the fun.

Tuesday night is BINGO NIGHT! Doors open at 7pm, eyes down at 8pm. New members are welcome. Come along, meet and make new friends. Refreshments are also available and it finishes around about 10pm.

Wednesday evening is Dance to the beat 5pm until 7pm. for details ring Miss Lackey on 321160.

If you like to dance we have Street dance and ballet classes on Thursdays, for ages from two and a half year to adults, 4.30 until 5.30pm. For full details contact Samantha on 07811299484.

Also Kick boxing from 7pm until 8.30pm.

The hall is also available to hire for parties at reasonable rates for details ring Janet on 363156.

**NEXT FAMILY PRIZE BINGO AT POPLEY FIELDS HALL**

**24TH MARCH 2017 DOORS OPEN 6PM**

**EYES DOWN AT 7PM.**

**BRING ALL THE FAMILY ALONG FOR A GREAT NIGHT.**

**GREAT BINGO AND RAFFLE PRIZES.**

**REFRESHMENTS AVAILABLE.**

## Cyclists invited to gear up for Ark to Arc

CYCLISTS who want to take part in a fun challenge and make a difference to two local cancer charities are being urged to sign up for a fundraising ride to the heart of Paris.

Ark to Arc will take place between July 12 and July 16, 2017 and will see 40 riders support Ark Cancer Centre Charity, which is raising £5million towards a unique local cancer treatment centre in the Basingstoke area, and Kingsclere-based Bike 4 Cancer.

The cyclists will set off from The Ark Conference Centre, where Ark Cancer Centre Charity is based, on July 12 and they will ride 255 miles to the Arc de Triomphe. On route, the riders will call in at Alençon, one of Basingstoke's twin towns.

The ride is being organised by Ark Riders – a group that has been formed to help raise money for Ark Cancer Centre Charity's £5m appeal in 2017 and beyond – and cycling-focused charity Bike 4 Cancer.

Last year, keen cyclists, who are now involved in the Ark Riders group, took part in cycling events which collectively raised nearly £100,000 for Ark Cancer Centre Charity.

Mark Dolby, who is one of the founders of Ark Riders and last year took part in the JOGLE16 – John O'Groats to Land's End – ride, said: "Last year's cycle rides were hard work but very memorable experiences, and many of those who took part wanted to take on another fundraising challenge for 2017."

Ark Riders co-founder and JOGLE16 rider Craig Killick added: "Ark to Arc will be very different to the 2016 events. It will be less gruelling than the JOGLE16 ride but it will still be a real challenge – and we are sure that it will be a lot of fun for all those who come along for the ride."

Merit Group have signed up as the Gold headline sponsor and there are five Silver sponsors – Croombs Electrical Services Limited, Excellent Windows, Doors & Conservatories, accountancy practice Lane Monnington Welton, Neale Turk LLP Solicitors, and Epicor.

All of the cyclists will be raising money through sponsorship pages set up by Bike 4 Cancer. The charity has extensive connections in the cycling sector and has played a key role in the organisation of Ark to Arc.

Bike 4 Cancer is a cancer respite charity with a sporting focus. It also helps to fund research and makes grants to palliative care centres. Half of the money raised through its Ark to Arc sponsorship pages will go to the charity and the other half to Ark Cancer Centre Charity.

Andy Hayward, trustee of Bike 4 Cancer, said: "We're delighted to be involved in this event and we hope that many more people who have been affected by cancer will get on their bikes and join in.

"People can secure their place with a £149 deposit. They can then pay a further £925 and raise what they can for the charities, or pay £425 and pledge to raise a minimum of £1,0000.

A professional support team will assist the riders throughout Ark to Arc, and accommodation and ferry and Eurostar travel is being provided as part of the entry fee.

A special Ark to Arc party will be held at The Tea Bar, in London Street, Basingstoke, on the evening of Thursday, March 30 – the day before the deadline for entrants to sign up for the ride.

The success of Ark Cancer Centre Charity's £5m appeal will ensure a range of support services and complementary therapies are available alongside chemotherapy and radiotherapy treatments in a calm and uplifting environment.

The new centre is largely being funded by Hampshire Hospitals NHS Foundation Trust (HHFT). It is earmarked for a location in the Basingstoke and Deane area, and if the preferred site near to Junction 7 of the M3 is approved, it will be easily accessible to everyone in the HHFT region.

All the details about Ark to Arc, including how to register, can be found by going to [arkriders.co.uk](http://arkriders.co.uk).



### Headquarters:

Base 2000 Carpenters Down, Popley RG24 9AE

Group Scout Leader: Colin Karslake 01256 410559

Scout section: Kevin Pocock 07717 108 560

Cub Scout section: Douglas Gowan 01256 412326

Beaver Scout section:

Vacancies exist for both boys and girls in all sections of the Group for young people. Are you feeling bored – why not try Scouting as a new interest and activity?



Beaver Scouts is the youngest section in the Association and provides challenging activities for boy and girls aged between 6 and 8 years. They meet in Base 2000 on Tuesday evenings from 5.30 p.m. to 7 p.m. They'll be visiting 4Kingdoms in April



Cub Scouts are aged between 8 and 10½ years. Meetings overlap the Beavers starting at 6.30 p.m. finishing at 8 p.m. in Base 2000. They've recently had a Chess completion and will be off to camp in the summer.



Scouts are aged from 10 ½ to 14 ½ years. Meetings are on Friday evenings in Base 2000 from 7 p.m. – 9 p.m. They'll be taking part in St. George's Day Celebration in April and off camping in the summer.

The aim of Scouting is to provide fun, challenge and adventure and encourage young people to achieve their full potential. Basingstoke Air Scouts are fortunate to have their own Headquarters in Base 2000 to facilitate a full programme of activities including sleepovers, creative activities and crafts, camping and wide games. Despite the dark, wintry evenings sections can still be found keeping the **OUT in ScOUTing** and use Basing Woods to explore flora and fauna, build overnight shelters or simply having fun.

**ScOUTing** It is a fully inclusive uniformed organisation. Programmes are run by trained adult volunteers committed to providing fun, challenge and adventure to boys and girls of all abilities. Prospective leaders are subject to a Disclosure and Barring Service confidential clearance and complete mandatory training in first aid, safeguarding and personal safety.

For those in the older age bracket (from 14 ½ to 18) Scouting offers Explorer Scouts (run on a District basis).

Contact Group Scout Leader Colin Karslake - 01256 410559 / 07796 772 500 or [colink@base2000.co.uk](mailto:colink@base2000.co.uk) for more information.

<https://www.facebook.com/BasingstokeAirScouts>

Charity number 267734

Headquarters registration number 42755



# Mark Smith Plumbing and Heating

Est. 1971

Proud to be members of  
**Checkatrade.com**  
Where reputation matters

Call 07968808454 or Email [markmsph@gmail.com](mailto:markmsph@gmail.com)

## No Call Out Charge And Free Quotations

All Plumbing and Heating Undertaken  
Full Bathroom Installations  
Landlord Safety Certificates  
Gas Boiler Maintenance  
Oil & Gas Boiler Installation  
Water Softeners, Showers, Taps etc  
Unvented Hot Water  
Gledhill, Megaflo & All Makes



## CHOOSE AT HOME CARPET SERVICE

*We come to you!*

Get the red carpet  
treatment in the  
comfort of your  
own home



**SAVE  
£££'S**

WITH NO  
SHOWROOM  
OVERHEADS WE  
PASS THE SAVINGS  
ON TO YOU

- We come to you with a range of samples.
- All leading makes supplied.
- The price we quote is the price you pay, no gimmicks and definitely no misleading special offers.
- All our installations are carried out to the highest standard.
- We can move your furniture and uplift old flooring if required.



**FYNE  
FLOORING**

- You pay the balance only when the work is complete and you are entirely satisfied.

Got a written quote from another company? We can often better it!  
**Make an appointment today on: 01256 686229**  
**FREE ADVICE FREE MEASURING FREE ESTIMATES**  
• Contract & Domestic • Commercial & Residential • Carpet & Flooring Service

## M H AUTOS SERVICE CENTRE

Unit 11 Vickers Business Centre  
Priestly Road, Basingstoke  
RG24 9NP

Servicing and repairs to all makes and models  
cars and light commercials  
Pre-MOTs/MOTs arranged by appointment  
clutches, brakes, shockers  
free fit exhausts, timing belts  
tuning, welding, diagnostics checks

Motor vehicle specialist

Free delivery and collection service  
Mobile & workshop facilities to suit you

For a friendly and personal service call Mark on  
Tel: 01256 467707 Mobile: 07879 638650





# You can't choose your neighbours

They say, 'you can choose your friends, but you can't choose your family.' The same could also be said of neighbours.

Neighbour disputes can be particularly fraught; apart from the old adage that 'an Englishman's home is his castle,' there are some obvious reasons for this.

Firstly, it is the parties' home and family lives that are directly affected which inevitably makes them highly 'personal.'

Secondly, parties are necessarily living side by side and as a result don't have the luxury of space and time away from the problem, which can often serve as such a sobering influence in a dispute. It is that much harder to approach matters calmly and practically when confronted on a daily basis with the problem and often matters escalate needlessly as a result.

There are a number of ways disputes can arise. If handled properly though, there is every chance of avoiding formal litigation, which can be lengthy, extremely costly and is always highly stressful for the parties involved.

Boundaries are a common source of discord. Whether it is by the land physically changing over time or by the boundary being poorly recorded, any ambiguity over the position of a boundary can lead to conflict. Boundaries features themselves can also cause problems; whether it is in establishing whose responsibility it is to maintain a boundary feature or whether anything can be done about an offending boundary feature, for example one that blocks sunlight from a neighbouring property.

There are probably endless other ways that could be found to fall out with a neighbour, but the most common other problem areas concern rights of way, parking, and nuisance, for example, excessive noise. Cases all turn on their particular facts and we will be able to advise you clearly as to where you stand in law and what your options are.

Where disputes become heated it can be sensible to avoid a direct approach and seek professional help. In extreme cases where there is any fear for anyone's safety you should in the first instance consider involving the police.

Whilst it remains unresolved, any dispute will directly affect your property. If you wish to sell, you will have to disclose the issue which could have a negative impact on the marketability or even the value of your property. It may seem that by instructing a solicitor you are escalating a dispute, but in most cases it is the best way of moving towards a solution quickly and calmly. Dealing with a difficult neighbour directly, perhaps over the back fence can make matters worse.

We advise that the best way to resolve disputes is by focussing solely on the legal issues and practical solutions. In fact our advice is to keep actual litigation through the courts to a minimum. If entered into prematurely the court process will be lengthier and more costly and in the vast majority of cases can be avoided altogether.

For more information and to find out how we might assist you, contact **Ben Pearson** on 01256 854608, or email [ben.pearson@phillips-law.co.uk](mailto:ben.pearson@phillips-law.co.uk) and visit our website [www.phillips-law.co.uk](http://www.phillips-law.co.uk).





## 1<sup>st</sup> Response

Heating & Plumbing



FOR

- Heating Installations
- Boiler changes/upgrades
  - Servicing
  - Breakdowns
- Landlord Safety Checks
  - Power Flushing

24 hour – 7 Days a Week

CALL

Jamie Davenport

Tel No: 01256 398611

Mobile No: 07876 687422

**Ofsted**  
Outstanding  
Early years provider

2014/2015



PRE-SCHOOL NURSERY IN  
SHERBORNE ST JOHN

We offer high quality care in a happy secure  
and stimulating environment

Term time only for children 2 years to school age

Open 5 mornings and 3 afternoons and lunch clubs a week

Educational structure – experienced and qualified staff

Set in idyllic location with large outdoor area  
and a playground

Ofsted report – OUTSTANDING  
Nursery Grants available

**For a prospectus call in or contact us  
on 075 287 26248**

Email: [info@piccolopsn.com](mailto:info@piccolopsn.com)

[www.piccolopreschool.co.uk](http://www.piccolopreschool.co.uk)

Piccolo Pre-school Nursery, The Sports Pavilion, Vyne Road,  
Sherborne St John, Basingstoke RG24 9HX

# What do accountants ever do for businesses?



"Well, our accountant does our VAT, payroll and year-end, saves us a load of tax, monitors our cash flow and our financial performance, makes sure we comply with HMRC rules, takes an active interest and is always there when we have a problem... they even handle our HR issues, so quite a lot really."



**Call us now on 01256 811415 to book  
your FREE business review with an active  
accountant.** Offer limited to 4 businesses per month

 **Lawrence Young**  
INSPIRED BUSINESS THINKING

**Chartered Management Accountants, Tax Advisers  
and Business Advisers to growing businesses in  
Hampshire, Berkshire and Surrey.**

**Saving you time, tax and money.**

Lawrence Young Ltd. Hart House, Priestley Road, Basingstoke RG24 9PU  
[www.lawrenceyoung.co.uk](http://www.lawrenceyoung.co.uk)



It has been a great season so far for MFC Popley Youth, with our youngest group, the **All Stars** showing tremendous promise and are itching to start matches next season as our new under 7s. The players are loving training and Seb, one of our players, has taught us all his Shark game for a warm up which the team love. Keep an eye out for our future stars.

A huge well done to our **under 7s**, they've continued to show great improvement this season, with a few successful games recently to show for it. Well done to you all!

Our **under 8s** are making some good progress and the players are enjoying their football. At the weekend they had some very competitive football with Sherborne St John and had 2 goals each from Henry Pratt and Tobie Punter including a penalty. Lewis Simmons also got two goals at the weekend in their second match.

Recent debutant Ben Lock put in a great show as keeper last week and got man of the match, followed up this week by Connor Simmons and William Dear for all round solid performances! Lewis Simmons also got two goals at the weekend in their second match. The team are looking forward to some better weather after half term to play some more great football!

Our **under 11s** recently held a Zumba session to raise funds for a training kit. We're glad to say all the boys and parents took part and they raised an amazing £150. Huge thanks to all who donated. On the pitch, the team is performing well in the league and the players are developing at a tremendous rate – keep up the great work team!

Huge congratulations to our **under 12 girls** team, who have had a tremendous season so far, and are confirmed as League Champions in the Berkshire County Girls League with a game to spare! We are as a club very proud of this newly formed team, and to see them play such great football whilst achieving the right results is hugely satisfying.

New players are always welcome, please register your interest with Stuart Perry at [u12@mfcpopleyyouth.co.uk](mailto:u12@mfcpopleyyouth.co.uk).

Our **under 12s** Predators and Venom teams have only managed a handful of games due to the recent bad weather. The Venom team continue in their lofty position of 2nd in their league, recording victories against Wey Valley (4-0), Beacon Hill (4-1) and losing to Alton FC (4-2) in only their second league defeat of the season. The Predator team is currently 4th in their league, playing only 2 league games since Christmas, very unlucky in their 1-1 draw with Junior Shots and narrowly going down 3-1 to Milford Pumas, on another day it could've been 2 wins.

Both teams are on the lookout for new players, please contact Andy Williams to register interest at [u12@mfcpopleyyouth.co.uk](mailto:u12@mfcpopleyyouth.co.uk).

Our **under 14s** Predators team is currently sitting 4<sup>th</sup> in the league table, and only 2 points off top with 9 games to play. They are still in with a shout if all goes to plan – keep up the hard work lads! They are currently looking for a Goalkeeper, please contact Stuart Perry to register your interest at [u14@mfcpopleyyouth.co.uk](mailto:u14@mfcpopleyyouth.co.uk).

Our **under 15s** have had a tough season so far, but the team turn out and keep battling through every minute, a turn of luck is definitely due. The team are looking to boost numbers, to register your interest, please contact Pete Davey at [u15@mfcpopleyyouth.co.uk](mailto:u15@mfcpopleyyouth.co.uk).

Our **under 16s** played Woodley Saints last weekend, winning 6-1. Having had a rocky start to the season, the team have firmly got hold on things in the league with the lads playing some lovely football and showing how resilient they are, grinding out some good games and winning emphatically in others. They are currently looking for players to join their existing squad. To register your interest please contact Darryl Bradbury at [u16@mfcpopleyyouth.co.uk](mailto:u16@mfcpopleyyouth.co.uk) or call 07825498504.

You can get regular updates from the club by following us on Twitter **@MFC\_PopleyYouth** & by using the hashtags **#MFCPY #REDandBLACKARMY**. You can also visit our dedicated club page on Facebook – **MFC Popley Youth**.

Some of our teams have secured generous sponsorship this season, and we would like to thank them for their support:

U8s – **Groveswood Machines**

U9s – **Alpha Cars**

U10s – **Dazzle**

U12s – **Southern Communications**

U14s – **Vohkus**

U15s – **Allens Group**

To contact the club, please email [committee@mfcpopleyyouth.co.uk](mailto:committee@mfcpopleyyouth.co.uk) for general enquiries or [volunteer@mfcpopleyyouth.co.uk](mailto:volunteer@mfcpopleyyouth.co.uk) to request details on volunteering at the club.

**Zak Collingwood**

## **Festival to Celebrate Jane Austen and other Home-Grown Talent**

‘Born in the Borough’ has been announced as the theme of the sixth Basingstoke Festival, which is set to be the best yet.

Attracting international artists and big name acts to perform in the borough is part of the planning work now underway for the Basingstoke and Deane Borough Council-run festival from Friday 16 June to Sunday 9 July.

But there will be a special reason for the festival to focus on local talent too, as July marks the 200th anniversary of the death of Jane Austen who was born in the borough at Steventon. Events and performances will be held through the festival to celebrate the world-renowned 19th century author, who drafted some of her best known works while living in this area.

Keeping this ‘home-grown’ focus, festival organisers are keen to ensure that as many areas as possible host a ‘Festival in the Community’ local event, especially helping to bring arts and performances to under used places around the borough.

Basingstoke Festival has grown in popularity and size since it started in 2012. Last year the festival featured more than 140 community events, such as plays and food festivals, complementing the main programme of world class events and experiences.

The borough council’s Deputy Leader, who is responsible for art and culture, Cllr Terri Reid said: “On the 200th anniversary of Jane Austen’s death, it is only right that the 2017 Basingstoke Festival, held in the borough where she was born, should highlight how her work still entertains and inspires people today. Special new pieces are being commissioned specially for the festival showing the continuing relevance of the themes in Jane’s writing. “And the ‘Born in the Borough’ theme gives us the opportunity to focus on the wealth of other talent we have here today, from local bands in Basingstoke Live to our young people being given the chance to perform on the Haymarket stage.

“Basingstoke Festival is becoming known as an diverse showcase of arts and performances, attracting world-renowned acts to perform and mixing this with celebrating work created on our doorstep by local people. We really hope groups across the borough will get involved again too, bringing music, arts and culture to their areas by hosting a Festival in the Community event.”

The 2016 Festival featured everything from a sacred masked dance by Tibetan monks, a celebration of female authors and a NASA-film backing Holst’s Planet Suite performed by the Royal Philharmonic Orchestra to an audio journey in a boat in Eastrop Park created by local artist Ben Mills and the Hanover Band performing a Handel masterpiece alongside Basingstoke Choral Society.

To find out more about holding a Festival in the Community event, contact Ross Harvie on [festival@basingstoke.gov.uk](mailto:festival@basingstoke.gov.uk) or call Ross on 01256 845676 before April 21.

To keep up to date with the latest news from Basingstoke Festival 2017 follow [@BstokeFestival](https://twitter.com/BstokeFestival) on Twitter and Instagram or like ‘Basingstoke Festival’ on Facebook (<http://facebook.com/basingstokefestival>)



***Basingstoke  
and Deane***

# **The Koi Dojo; Home of Koryu Bujutsu & Ninpo Tai Jutsu in Basingstoke**

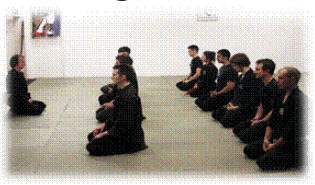
**Authentic Japanese Martial Arts for Everyone.**

Ancient arts and strategies for the modern world.  
Classes and techniques suitable for men and women, aged  
18 and over only.

If you are looking for self defence, traditional martial arts,  
to get fit, gain more confidence, de-stress or simply expand  
your social circle, the Koi Dojo is the place for you. The  
self defensive principles of these arts are very simple,  
survive and defeat your attacker as quickly and simply as  
possible.

New students welcome, beginners classes now available.

**Contact [mark@shinobikaiuk.co.uk](mailto:mark@shinobikaiuk.co.uk)**



# **MMC ELECTRICAL**

Reliable and friendly local electrician.

All types of electrical work undertaken.

- Additional lights/sockets
- Complete re-wires
- Fuseboard changes
- Outside lights
- Fault finding

Free estimates

20 years experience

**Call Mark on 07948 527231**

# ***IPS hair***

**Styling for the whole family**

Award winning and experienced stylist. Available to  
style your hair in the comfort of your own home  
or at my home-based salon.

# **£5 OFF**

**Cut & Blow Dry**

~~£28~~

Only **£23** With this voucher

Phone Ian on: 0790 9577 199  
01256 363600

[www.ipshair.co.uk](http://www.ipshair.co.uk)

## **Qualified Plumber and Property Maintenance Services**

### **Based in Popley**

Bathroom and Kitchen refits  
Plumbing and Heating  
Certified Gas and Electric Works



Plastering, Painting and  
Decorating  
Carpentry  
Fencing

**HANDYMAN SERVICES/  
SMALL JOBS WELCOME**

No call out charge  
Free Estimates

**Call Mickey**

Tel No: **07888 828 542**

Email: [mickeyfish@hotmail.com](mailto:mickeyfish@hotmail.com)



## Grand Jumble Sale!

Toys, Nick Nacks, Books, Children, Adult Clothing, & More!

All Clean/Working Donations Welcome!  
(Leave in the office Mon-Fri 7.30am-12.30pm)

**THURSDAY 16TH MARCH**  
**3-5pm**

MELROSE COMMUNITY HALL,  
ABBEY ROAD, POPLEY 01256 420676



## LinguaTastic Language Academy

Classes for:

- Babies/ Pre-schoolers
- Primary school children
- Secondary school children
- Adults



French

Italian

Mandarin

Spanish

English

German

**info@linguatastic.com**

**471 474**

**Race Night!! Friday 31st March 17 Doors open 7.00pm**  
**Popley Fields Community Center 18+only**



**Organised by Melrose Community Association**

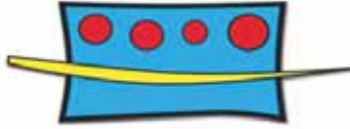
**Refreshments and hot food available**

**Entrance £1 per person**

**For Further Information please call 01256 420676**



## HOSPITAL RADIO BASINGSTOKE



North Hampshire Hospital, Aldermaston Road, Basingstoke, Hants, RG24 9NA

Tel: Roger Scott 01256 782477 E-Mail: [mailbox@roger-scott.co.uk](mailto:mailbox@roger-scott.co.uk)

Web Site: [www.hrbasingstoke.co.uk](http://www.hrbasingstoke.co.uk)

Registered Charity: 272046

Hospital Radio Basingstoke is the free radio service for the patients and staff at Basingstoke and North Hants Hospital. There has been a radio station at the hospital in Basingstoke since 1972 and our aim is to provide information and entertainment to patients throughout their stay.

Our programme schedule covers requests and dedications and a range of other shows of all types, from comedy and plays to specialist music shows. Our record library goes right back to the 1940s and spans all decades right through to current chart sounds.

Listen at <http://webradio.radiomonitor.com/m3u/HRBasingstoke>

We provide programming 24 hours a day but most importantly, our request shows are on the air in the evenings and during the day at weekends.

We are always looking for new members to join the HRB team. Full members will be shown how to produce and present a regular show, while Ward Visitors spend time during the day or in the evening visiting patients, collecting requests and promoting the station.

In addition to presenters and ward visitors we are particularly looking for anyone who may be interested in one of several Committee positions: Fundraising Officer, Public Relations Officer, Secretary or Station Manager.

If you would like to have a chat about volunteer opportunities on Hospital Radio Basingstoke (HRB) then please contact Roger Scott – 01256 782477 or email: [mailbox@roger-scott.co.uk](mailto:mailbox@roger-scott.co.uk) You can also check our website at [www.hrbasingstoke.co.uk](http://www.hrbasingstoke.co.uk)

Local Radio can be lots of fun, so why not give me a call.

**Roger Scott**  
**HRB Committee Member**

ST GABRIEL'S CHURCH  
PRESENTS  
MOVIE TIME  
SATURDAY 25<sup>TH</sup> MARCH

3pm "Inside Out"

6pm "Singin' in the Rain"

Admission FREE! Refreshments on sale!

in aid of the Buildings Project

St Gabriel's Church Tewkesbury Close RG24 9DU.

[www.stgabrielspopley.net](http://www.stgabrielspopley.net)



[www.projectg.org.uk](http://www.projectg.org.uk)

---

**THE KEITH BRANT MULTIPLE SCLEROSIS TRUST**

(Charity No: 1058529)

The Trust Fund was started by Keith Brant, during his mayoral year in 1993, to make small grants to sufferers of Multiple Sclerosis who live within the Borough of Basingstoke and Deane. We aim to help with the purchase of equipment that will significantly improve your life. Applications are dealt with on a regular basis and there is no limit to the number of times you can apply as we recognise that Multiple Sclerosis is a progressive condition and an individual's needs may change.

If you suffer from MS, or know someone who does, please phone 07974679039 for more details and an application form. (All applications must be signed by the applicant's doctor).

Keith Brant  
**M**  
**TRUST**

*Small grants that make  
a world of difference*

---

**Learn about the Development and Design of Stained Glass**

Tadley WEA is offering a wonderful opportunity to learn about the development and design of stained glass in English cathedrals since medieval times. The class will run for 5 weeks on Friday mornings 9.45 to 11.45 starting on 5th May 2017. The cost for this course is £41. If you are interested please go to [enrolonline.wea.org.uk](http://enrolonline.wea.org.uk) for details.



# St. Michael's Hospice Farleigh Wallop Woodland Walk

Sunday 9<sup>th</sup> April

Lord Portsmouth Estate, Farleigh Wallop, Hampshire

## Registration has opened!

Here's a great opportunity to give yourself something to look forward to; register for a wonderful spring day out as St. Michael's Hospice have again organised walks around the beautiful Lord Portsmouth Estate in Hampshire on Sunday 9<sup>th</sup> April.

With beautiful views across the rolling Hampshire countryside, blooming bluebells and the opportunity to spend quality time with friends and family, two legged or four legged, what better way to enjoy the new season.

Starting from 9.30am, there are two routes, 5 or 10 miles and both guaranteed to give you a superb day out. At the end, you will be welcomed to help celebrate the Hospice's 25<sup>th</sup> Anniversary by enjoying a delicious cream tea in the stunning setting of Home Barn.

Chris Griffiths, Marketing and Events Manager at St. Michael's Hospice said "This event is always one of our most enjoyable, coming at a time of the year when people are really beginning to enjoy being outdoors again. The funds raised are vital to our work at the Hospice where this year we will need to raise £3.1 million".

To sign up and for more information please visit the Hospice website: [stmichaels hospice.org.uk/events](http://stmichaels hospice.org.uk/events) or call fundraising on 01256 848 848 or follow us on Twitter @smhbasingstoke **#WoodlandWalk**



REGISTER WITH US TODAY AT OUR WEBSITE  
[thebarnbathrooms.co.uk](http://thebarnbathrooms.co.uk)  
FOR DETAILS OF OUR AMAZING NEW OFFER



[thebarnbathrooms.co.uk](http://thebarnbathrooms.co.uk)

THE BARN BATHROOM CENTRE  
UNIT 1, ANCHOR COURT  
LONDON STREET, BASINGSTOKE  
HAMPSHIRE RG21 7NY  
TEL: 01256 843111

VISIT THE BARN BATHROOM  
CENTRE FOR AN AMAZING  
SELECTION OF CONTEMPORARY  
AND TRADITIONAL BATHROOMS  
AND BATHROOM EQUIPMENT.

SHOWROOM OPENING TIMES  
MON - WED 8.30am - 5.30pm  
THUR 8.30am - 7.00pm  
FRID 8.30am - 4.00pm  
SAT 9.30am - 3.00pm

FREE PARKING AT THE REAR OF THE SHOWROOM

# FASTFARE

## Your Local Family Convenience Store

Abbey Road (Shops) ☎(01256) 323679

Open seven days a week

Monday–Friday 8:00am–9:00pm Saturday 8:30am–9:30pm Sunday 9:00am–9:00pm

Grocery | Stationery | Off Licence | Fresh Fruit & Vegetables | Fresh Flowers

Fresh Sandwiches | Pies | Ethnic, Polish & Indian Groceries

We serve crushed Ice Drinks

• **Now Available UPS Parcel Service • Play Now Lottery + Scratch Cards**

• Faxing and photocopying available • We Accept Milk Tokens

• Paypoint pay your bills Gas, Electric, Mobile Top ups ETC.

• Western Union Money Transfer Services • International Phone Cards

## LOOK OUT FOR MONTHLY PROMOTIONS

**If you don't see what you want in the store, please ask and we will try to get it for you.**

## FASTFARE PHARMACY

UNIT 3 ABBEY ROAD SHOPS ☎/📠357637

### FREE PRESCRIPTION COLLECTION AND DELIVERY SERVICE

We fill your prescriptions at Fastfare Pharmacy from most surgeries.

There is also a free collect and deliver service. We also take your repeat prescription, collect and deliver FREE OF CHARGE. NHS or Private.

Among our many services we offer:- Blood pressure check, Diabetic, Cholesterol check-ups and monitoring. A Private consultation area for patients. We advise on medication and treatment of minor illness by our qualified Pharmacist. Pregnancy advice and morning after pill available. We hold a comprehensive stock of Motability Equipment for hire or purchase. Just ask and help us to help you.



**For further details ring ☎357637**

Opening Hours

Monday-Friday 9am-7pm; Sat 9am-5pm



**Printed by Personalised Print ☎352434 Email:p.print@virgin.net**